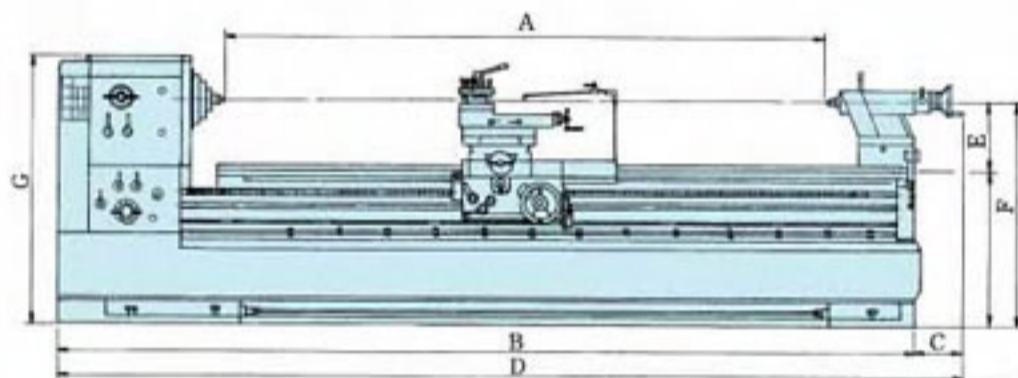


HEAVY DUTY PRECISION LATHE DY-680,780,880G

DY-680.780.880G (Length, 1100, 1600, 2000, 2500, 3000, 3500, 4000, 5000, 6000 mm)

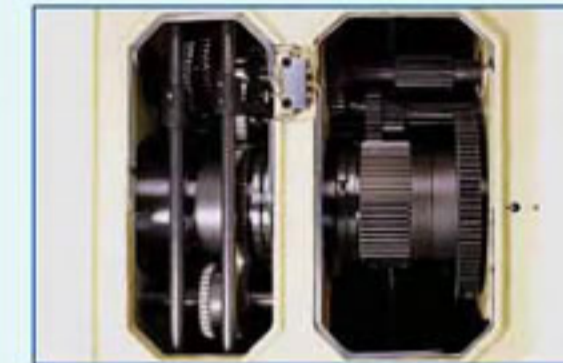


DIMENSION



機型	尺寸	A	B	C	D	E	F	G
DY-680G	-	-	-	-	-	340	1100	1350
DY-780G	-	-	-	-	-	390	1150	1400
DY-880G	-	-	-	-	-	440	1200	1450
DY-780 x 1100G	1100	2700	150	2850	-	-	-	-
DY-780 x 1600G	1600	3200	150	3350	-	-	-	-
DY-780 x 2000G	2000	3700	150	3850	-	-	-	-
DY-780 x 2500G	2500	4200	150	4350	-	-	-	-
DY-780 x 3000G	3000	4700	150	4850	-	-	-	-
DY-780 x 3500G	3500	5200	150	5350	-	-	-	-
DY-780 x 4000G	4000	5700	150	5850	-	-	-	-
DY-780 x 5000G	5000	6700	150	6850	-	-	-	-
DY-780 x 6000G	6000	7700	150	7850	-	-	-	-

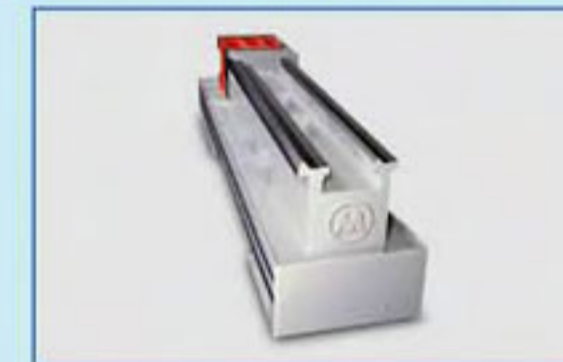
INTERNAL STRUCTURE OF HEADSTOCK



Headstock box uniquely designed to use high class iron and all running parts are lubricated by pressure pump. Forced lubrication system is employed for headstock to ensure its lubrication and cooling when high speed revolve and keep accuracy lasting. Gears in the headstock are made of chromium molybdenum steel (SCM-21), treated by cementation then precisely ground to provide smooth and quiet running. Cross slide ways are hardened and precisely ground to increase working life over 3 times. Middle angle tooth is designed with immersing style, which reduces abrasion.



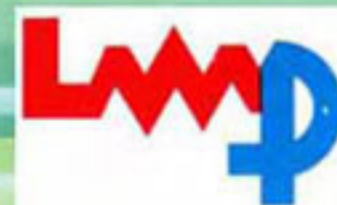
THE STRUCTURE OF BASE



The structure of base One piece of base is made of meehanite casting, induction hardened and precision ground. Main motor and cool pump are devied under base which is safe and saves time.



The spindle is 3 pointed type is supported by precision double lines of rollers and taper roller bearings. The spindle is supported by automatic forced lubrication system. We use the first class gears for spindle made of chromium molybdenum steel treated by cementation then precisely ground.



林寶機械貿易私人有限公司

LIM POH MACHINERY TRADING PTE LTD

NO. 111, UBI AVE 4, CIVIC TERRACE WAREHOUSE, SINGAPORE 408761.

E-mail: enquiry@limpoh.com Website: http://www.limpoh.com

TEL: 6846 1138 FAX: 6841 2832

GST Reg. No. M2-0067812-5 Business Reg. No. 198404054E